

# Montclair BOE

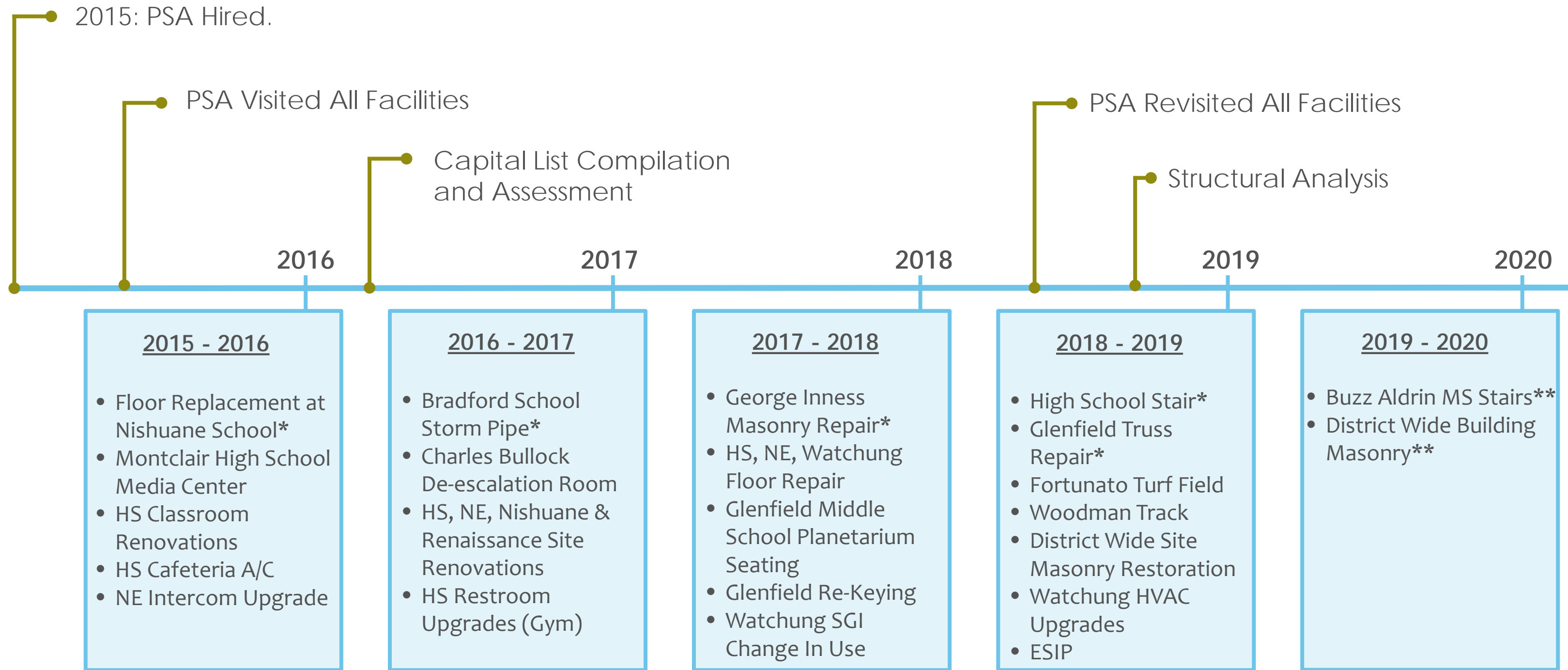


## District Wide Improvements

# AGENDA

- Montclair BOE & PSA Completed Projects Timeline
- Active Projects
- District Wide Building Masonry Improvements

# Montclair BOE & PSA Timeline



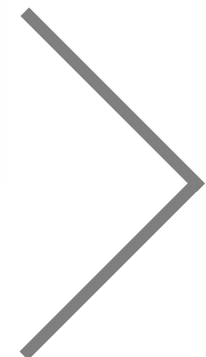
*Not all projects included.*

\*Emergent Project

\*\*Priority Project

# MONTCLAIR HIGH SCHOOL

## Toilet Renovations





# MONTCLAIR HIGH SCHOOL

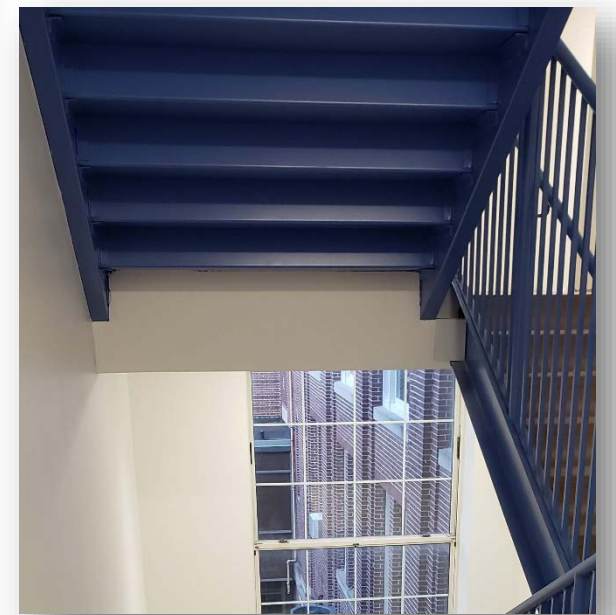
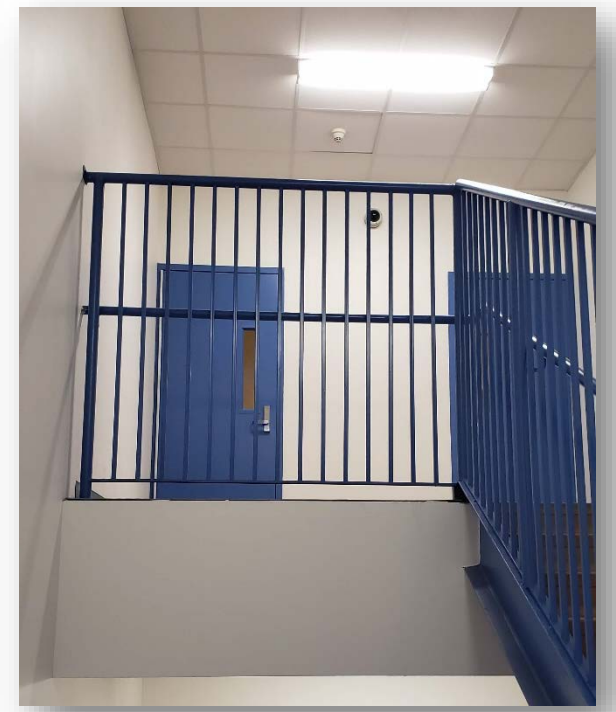
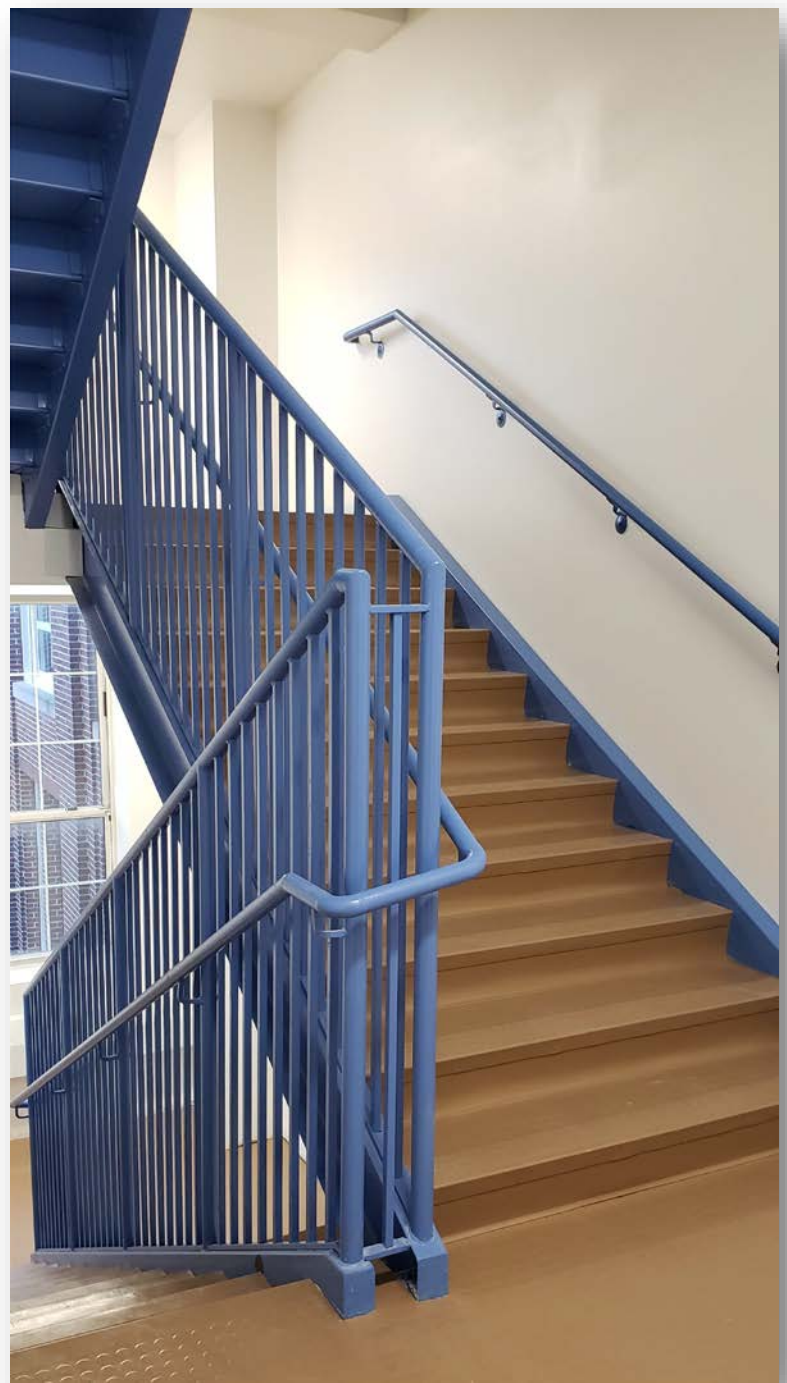
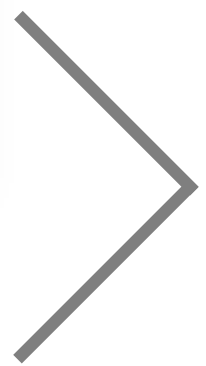
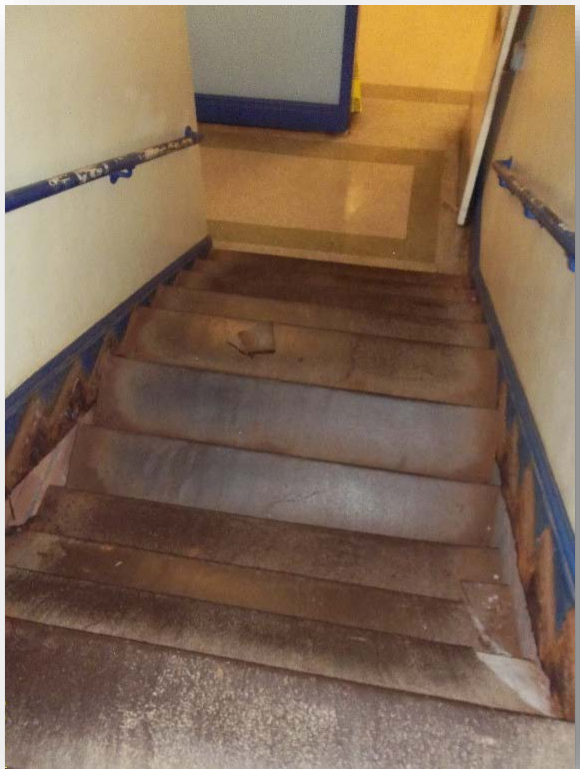
*Paving*





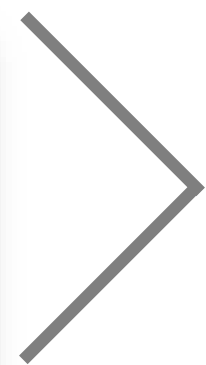
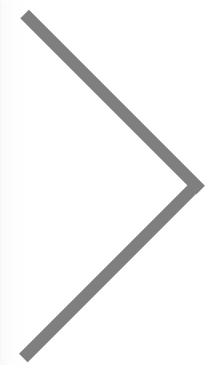
# MONTCLAIR HIGH SCHOOL

## Stair Replacement



# NISHUANE ELEMENTARY SCHOOL

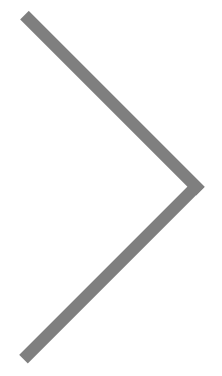
## *Paving*





# GLENFIELD MIDDLE SCHOOL

## *Truss Repair*

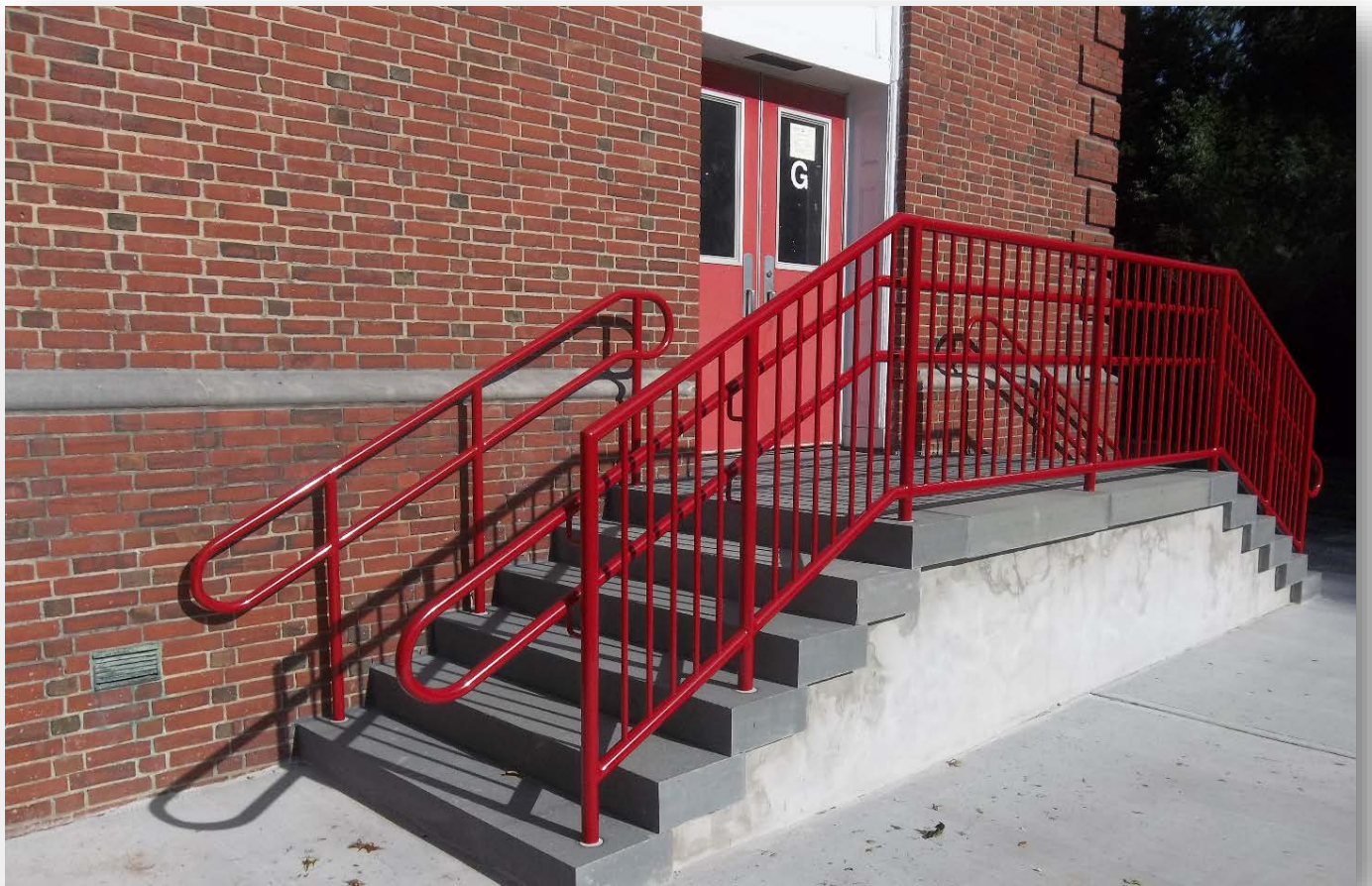
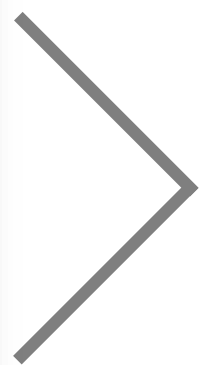






# EDGEMONT ELEMENTARY SCHOOL

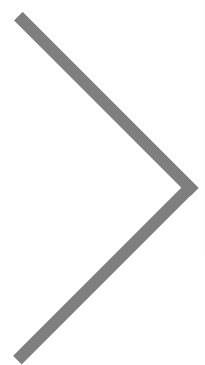
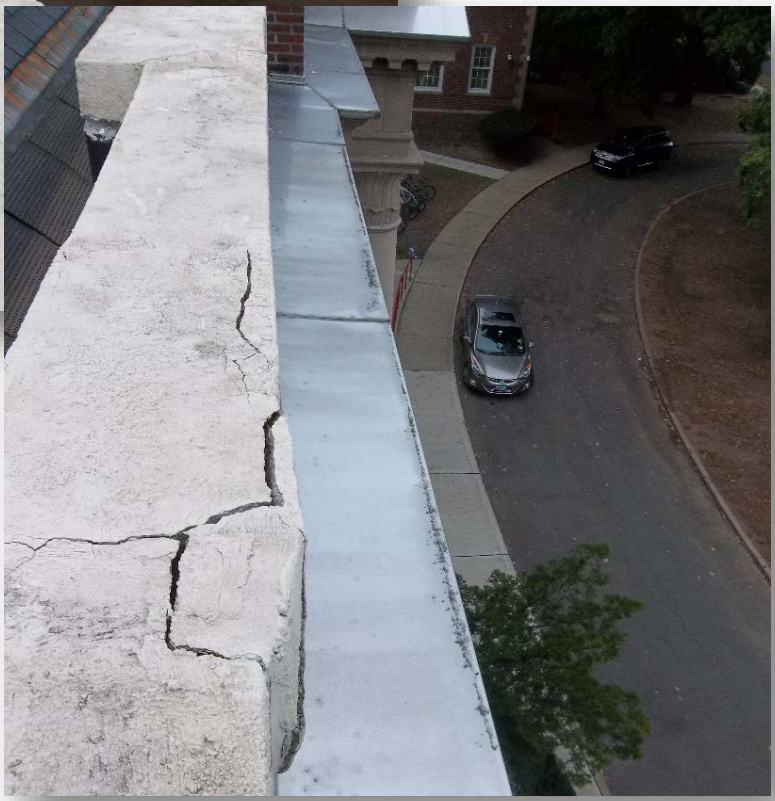
*Exterior Stair Reconstruction*





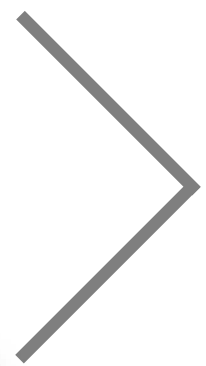
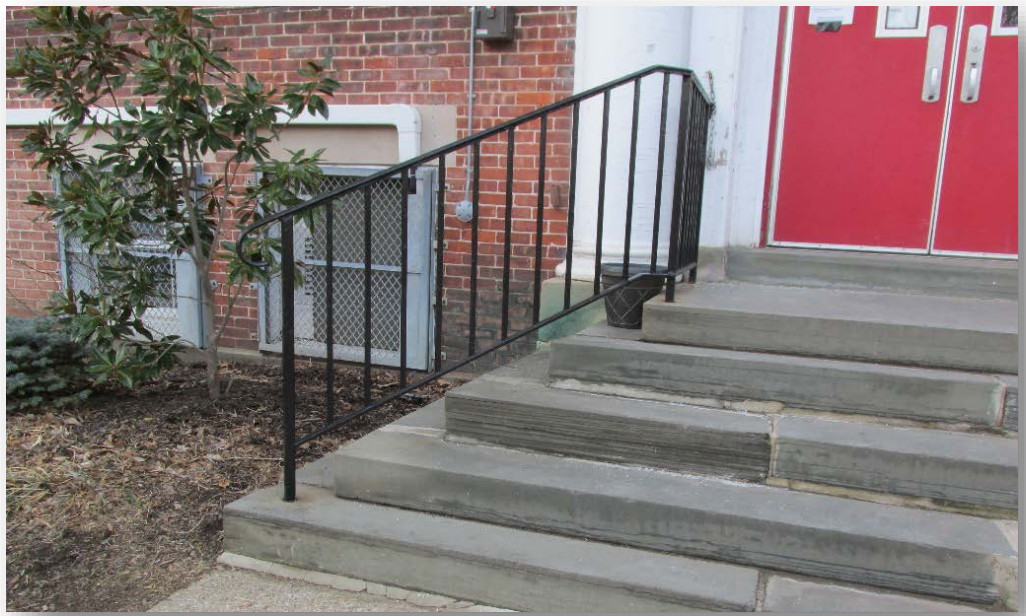
# GEORGE INNESS ANNEX

*Masonry Repair & Restoration*



# WATCHUNG ELEMENTARY SCHOOL

## Exterior Stair Reconstruction





# FORTUNATO FIELD

*Turf Replacement*



# WOODMAN FIELD

## Track Replacement



Photo by Andrew Garda/Staff

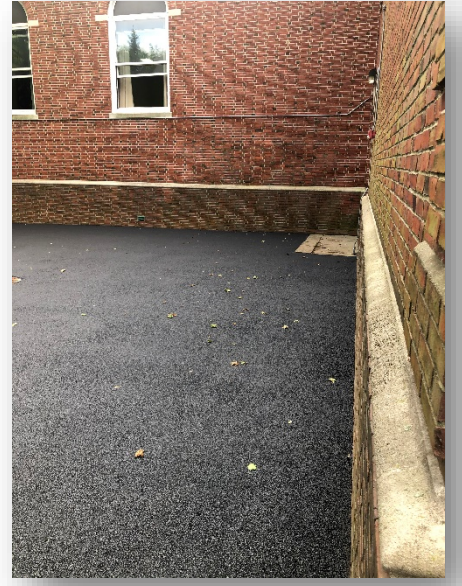
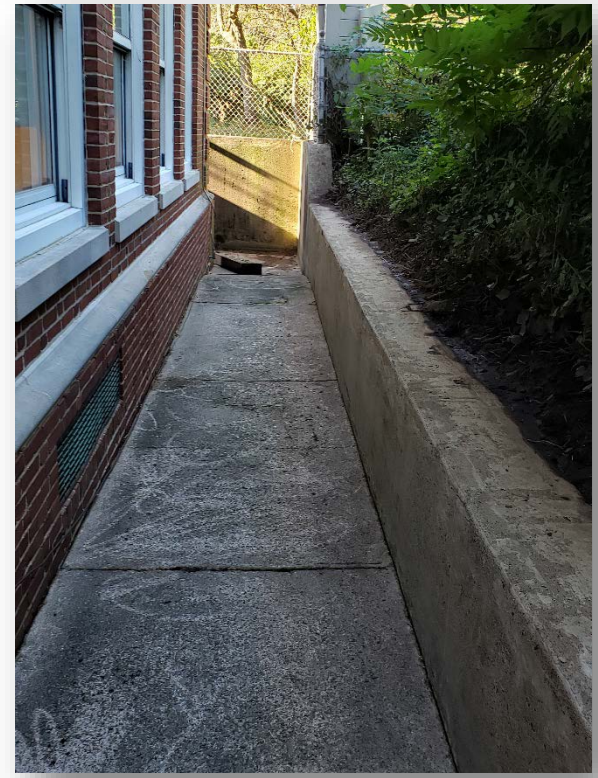
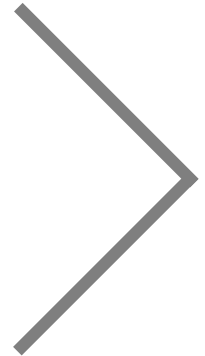
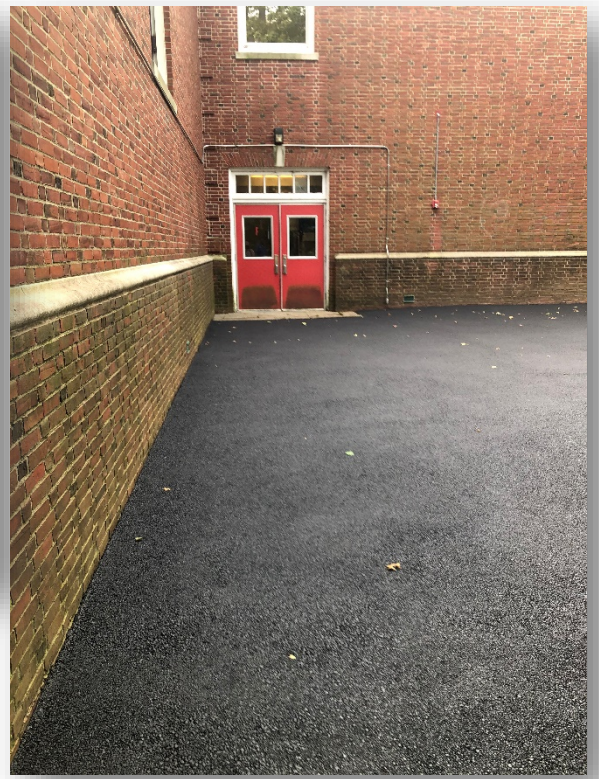
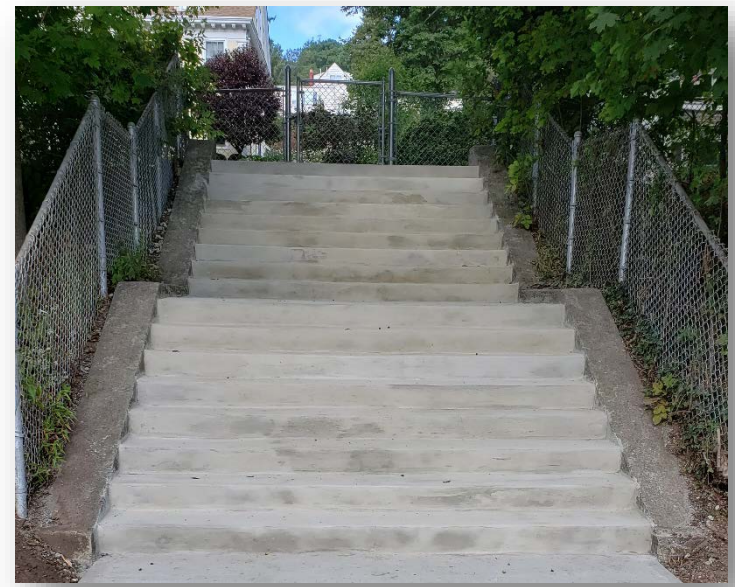
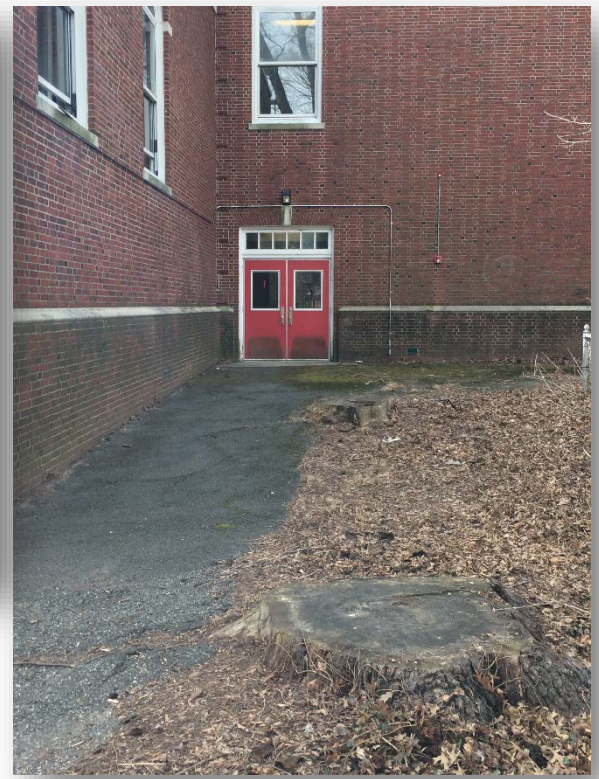
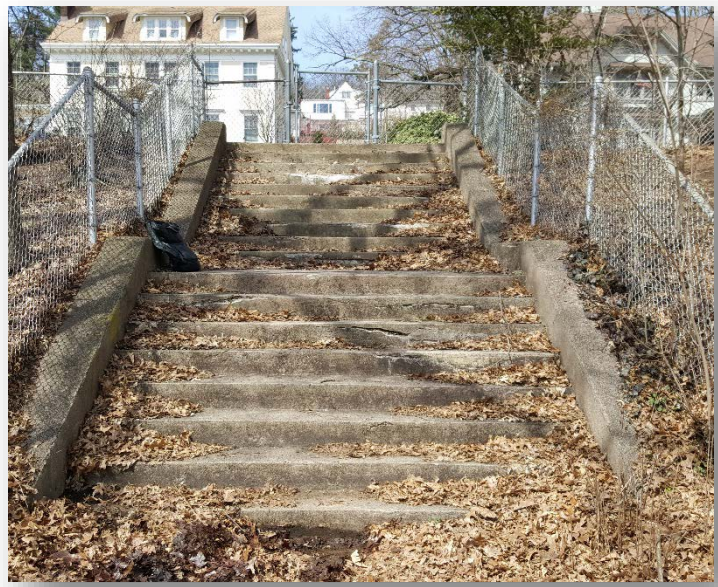


# ACTIVE PROJECTS

- District Wide Site Masonry Improvements
- Energy Savings Improvement Program (ESIP)
- In Development:
  - Nishuane Chair Lift Replacement
  - Edgemont School Chair Lift Replacement
  - Glenfield School Attic Insulation
  - Buzz Aldrin Middle School Stair Replacement

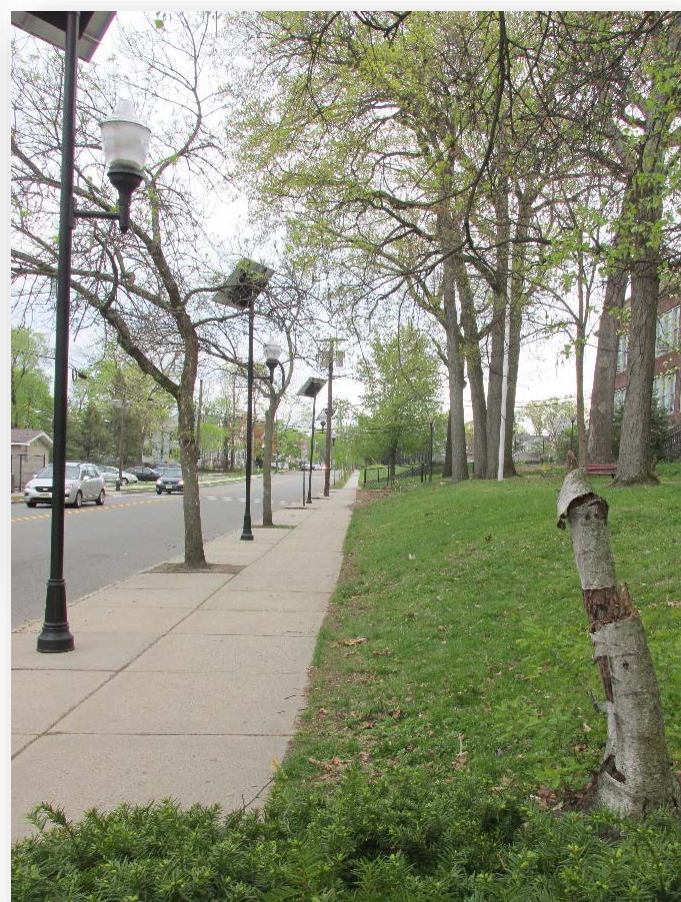
# DISTRICT WIDE SITE MASONRY IMPROVEMENTS

## EDGEMONT SCHOOL



# DISTRICT WIDE SITE MASONRY IMPROVEMENTS

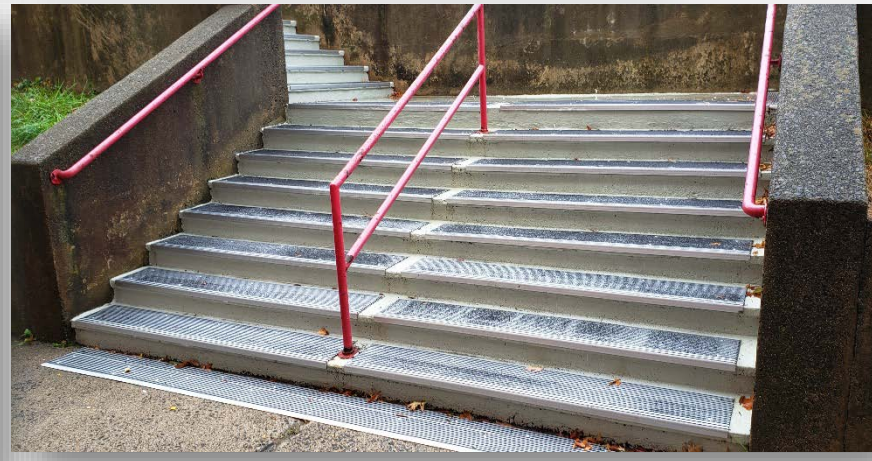
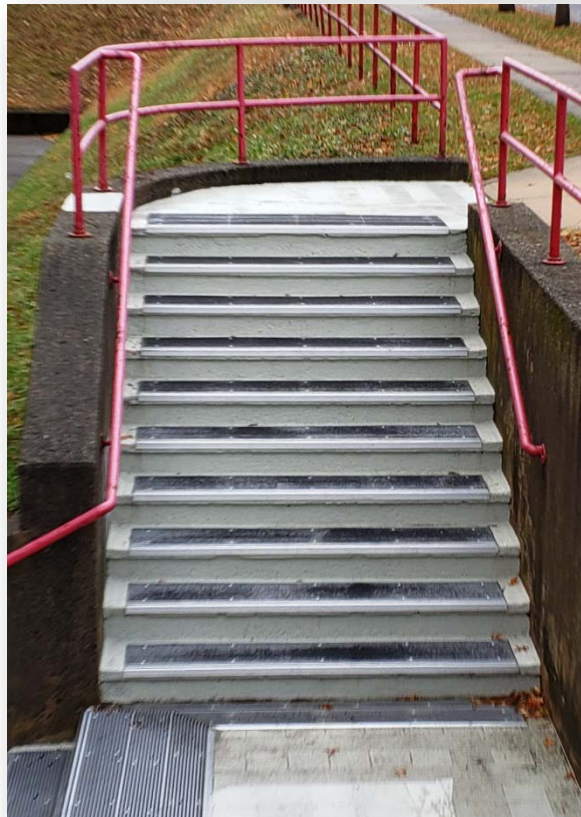
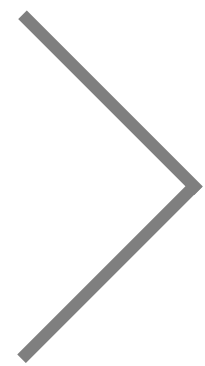
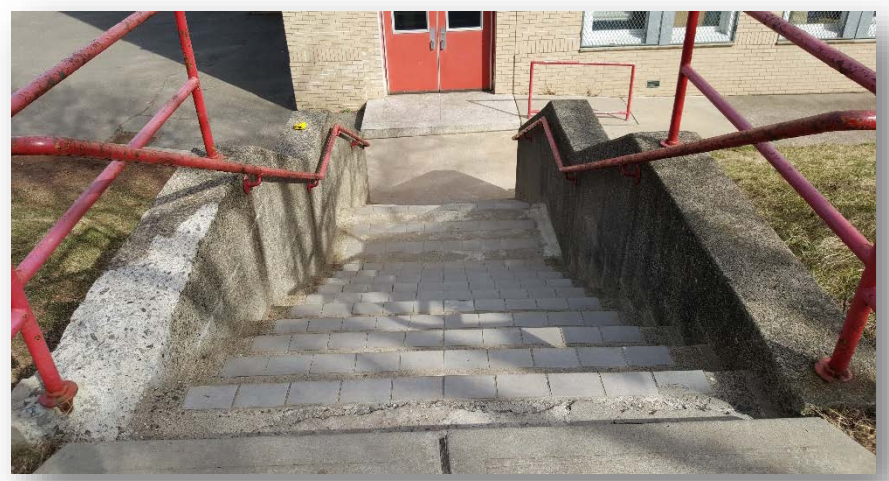
## RENAISSANCE AT RAND MIDDLE SCHOOL





# DISTRICT WIDE SITE MASONRY IMPROVEMENTS

## HILLSIDE ELEMENTARY SCHOOL





# BUZZ ALDRIN MIDDLE SCHOOL

*Stair Replacement (In Development - Summer 2020 Construction)*

## FUTURE VISION & INITIATIVES:



- PSA reported on potential concerns regarding these stairs per the draft structural analysis issued on January 8, 2019, and included in the final report dated May 29, 2019.
- The District brought to PSA's attention concerns regarding these stairs on November 25, 2019.
- PSA further investigated the conditions. This involved destructive investigation not previously conducted.
- Treads were demolished to reveal concealed spaces and hidden conditions.
- Since investigations, PSA has been in process of developing construction drawings to replace these stairs.



# GEORGE INNESS ANNEX

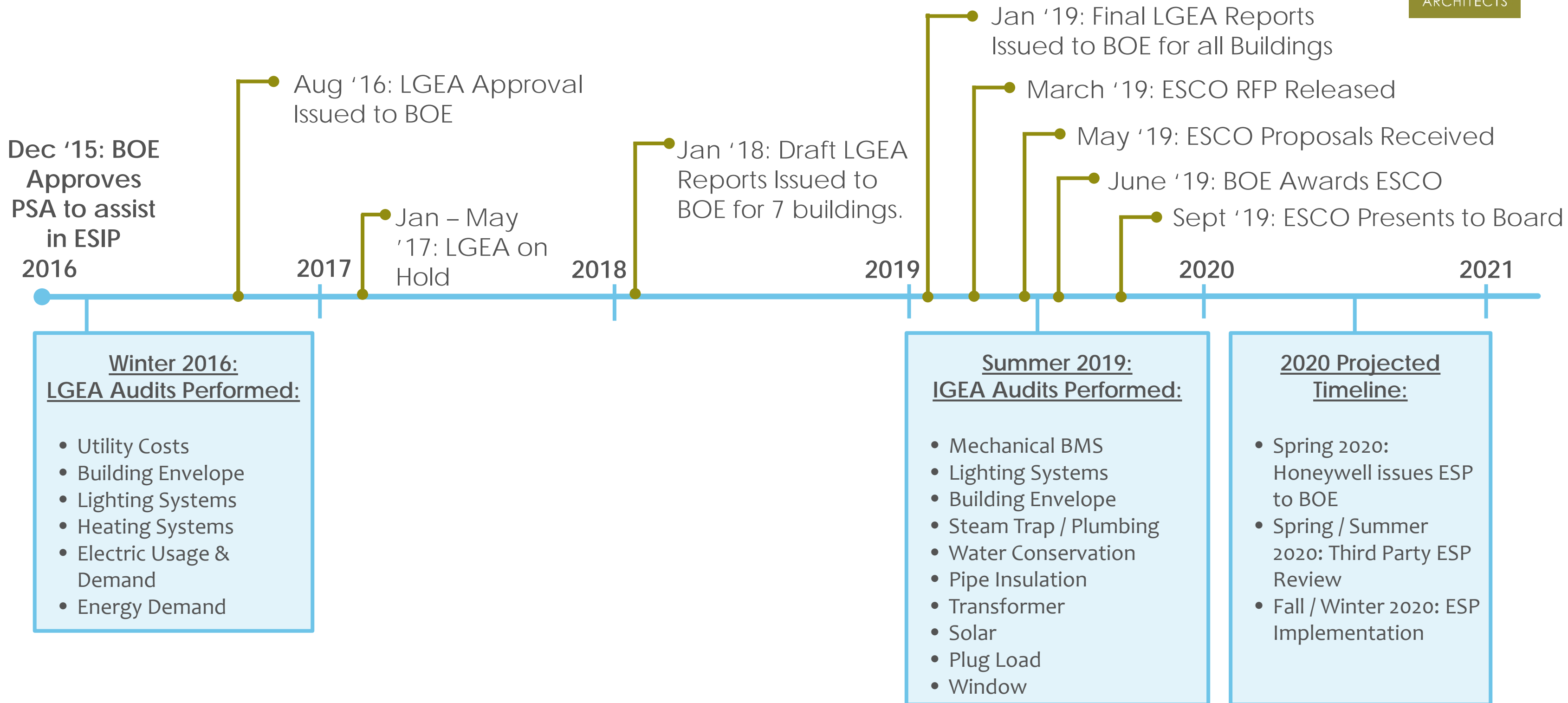
*Stair Replacement (Priority for Future Project)*

## FUTURE VISION & INITIATIVES:



- PSA reported on a number of visible concerns regarding these stairs per the draft structural analysis issued on January 25, 2019. (Final report was issued May 29, 2019.)
- The District brought to PSA's attention concerns regarding concealed portions of these stairs on December 17, 2019.
- After walls were opened to reveal concealed spaces, PSA further investigated the conditions. This required destructive investigation not previously conducted.
- Since these investigations, PSA awaits direction on how to proceed.

# ENERGY SAVINGS IMPROVEMENTS PROGRAM (ESIP)



DISTRICT WIDE  
BUILDING  
MASONRY  
IMPROVEMENTS



# BUILDING MASONRY-BACKGROUND & HISTORY

*Buzz Aldrin Cornice*

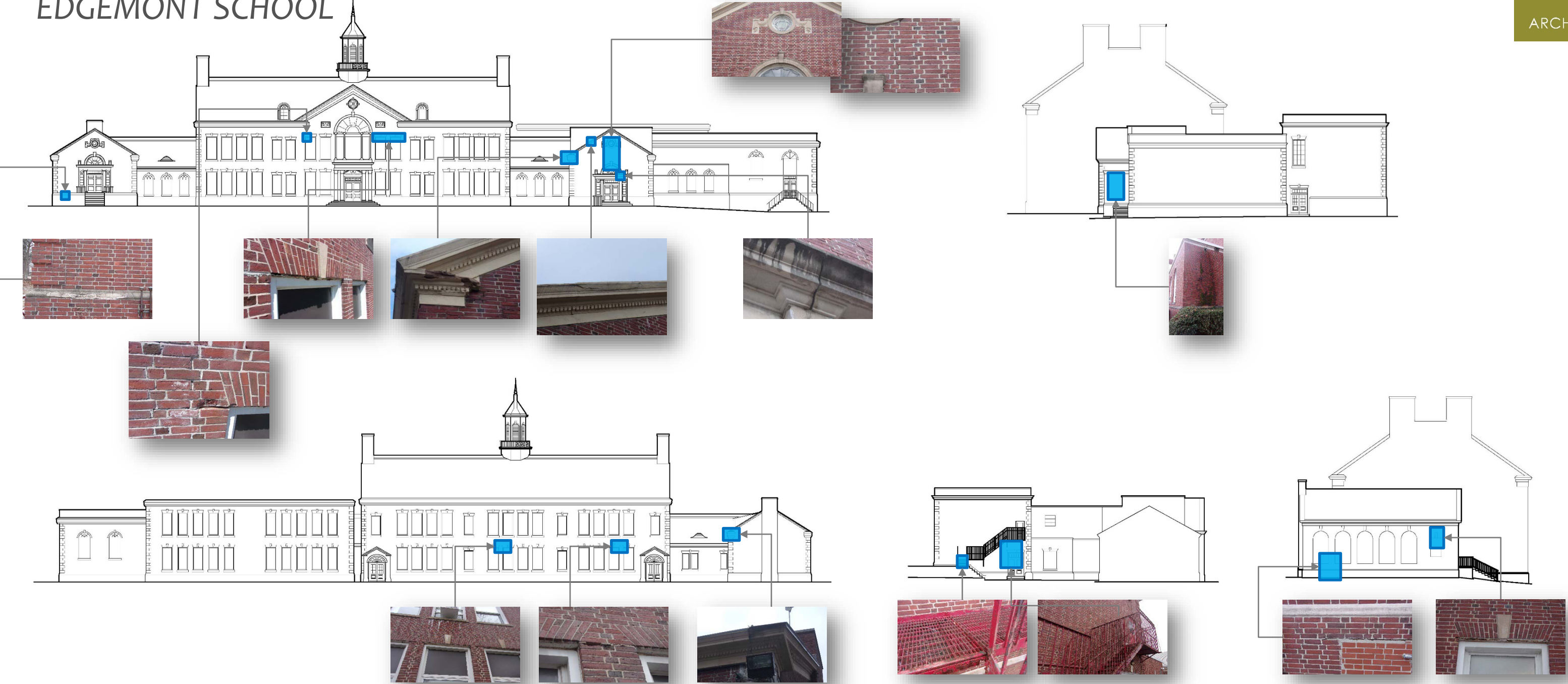


# BUILDING MASONRY-PROJECT SCOPE

ADMINISTRATION BUILDING:	Masonry restoration to brownstone base and window sills, and brick repointing.
BRADFORD ELEMENTARY SCHOOL:	Masonry restoration and waterproofing at cast stone/limestone, repair of brick chimneys, and metal coping installation.
BUZZ ALDRIN MIDDLE SCHOOL:	Masonry restoration and water proofing, lintel replacement, and metal coping replacement.
CENTRAL HEATING PLANT/COAL BUNKER:	Masonry restoration/brick repointing and waterproofing, and structural repairs to former coal bunker structure.
CHARLES H. BULLOCK:	Repointing to cast stone pilasters and wall panels.
EDGEMONT ELEMENTARY SCHOOL:	Cornice Repair, lintel replacement, and barrier free ramp repairs.
GEORGE INNES ANNEX:	Cast stone masonry repair, lintel replacement, and concrete slab repairs at “Little Theater.”
GLENFIELD MIDDLE SCHOOL:	Cupola restoration, brick repointing, and lintel replacement.
HILLSIDE ELEMENTARY SCHOOL:	Brick masonry repointing, and lintel replacement.
MONTCLAIR HIGH SCHOOL:	Masonry restoration and waterproofing, parapet masonry and metal coping repairs, and repair Wood Shop concrete floor slab.
NISHUANE ELEMENTARY SCHOOL:	Cornice restoration and waterproofing, brick masonry, repointing, and lintel replacement.
NORTHEAST ELEMENTARY SCHOOL:	Masonry restoration and repointing, ashlar stonework repairs, lintel replacement, and metal coping on parapet replacement.
MONTCLAIR COMMUNITY PRE-K:	Miscellaneous masonry restoration, brick repointing, waterproofing, and lintel replacement.
RENAISSANCE AT RAND:	Miscellaneous masonry restoration, brick repointing, waterproofing, and lintel replacement.
WATCHUNG ELEMENTARY SCHOOL:	Metal coping and repointing at parapet walls, and lintel replacement.

# BUILDING MASONRY - INVESTIGATIONS

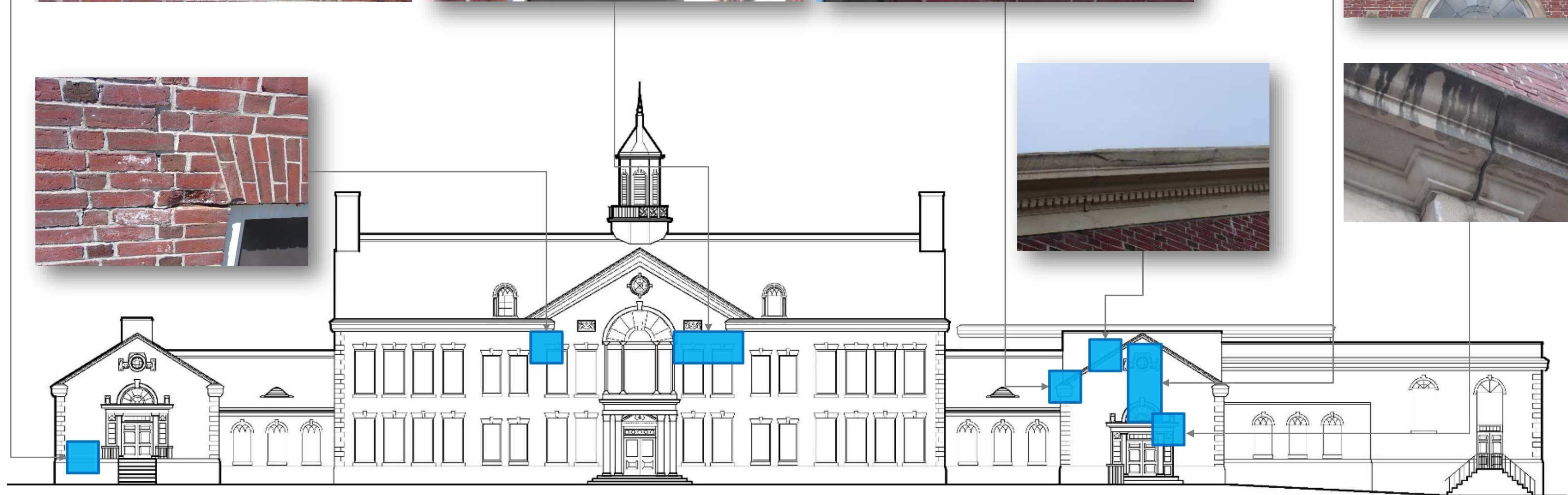
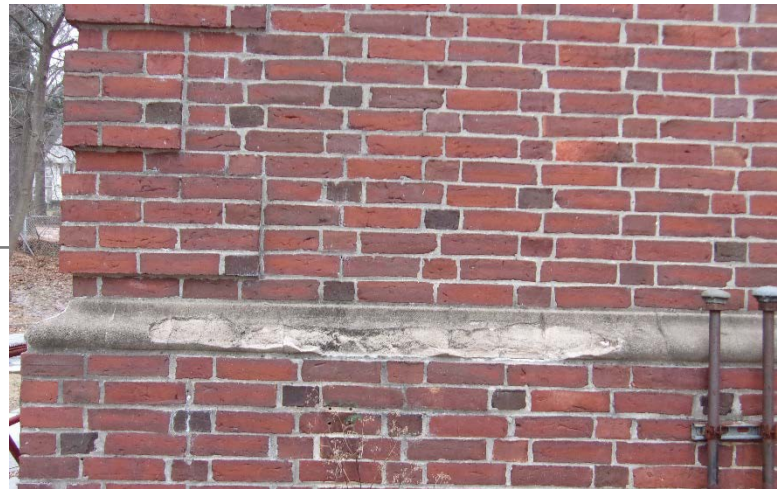
EDGEMONT SCHOOL





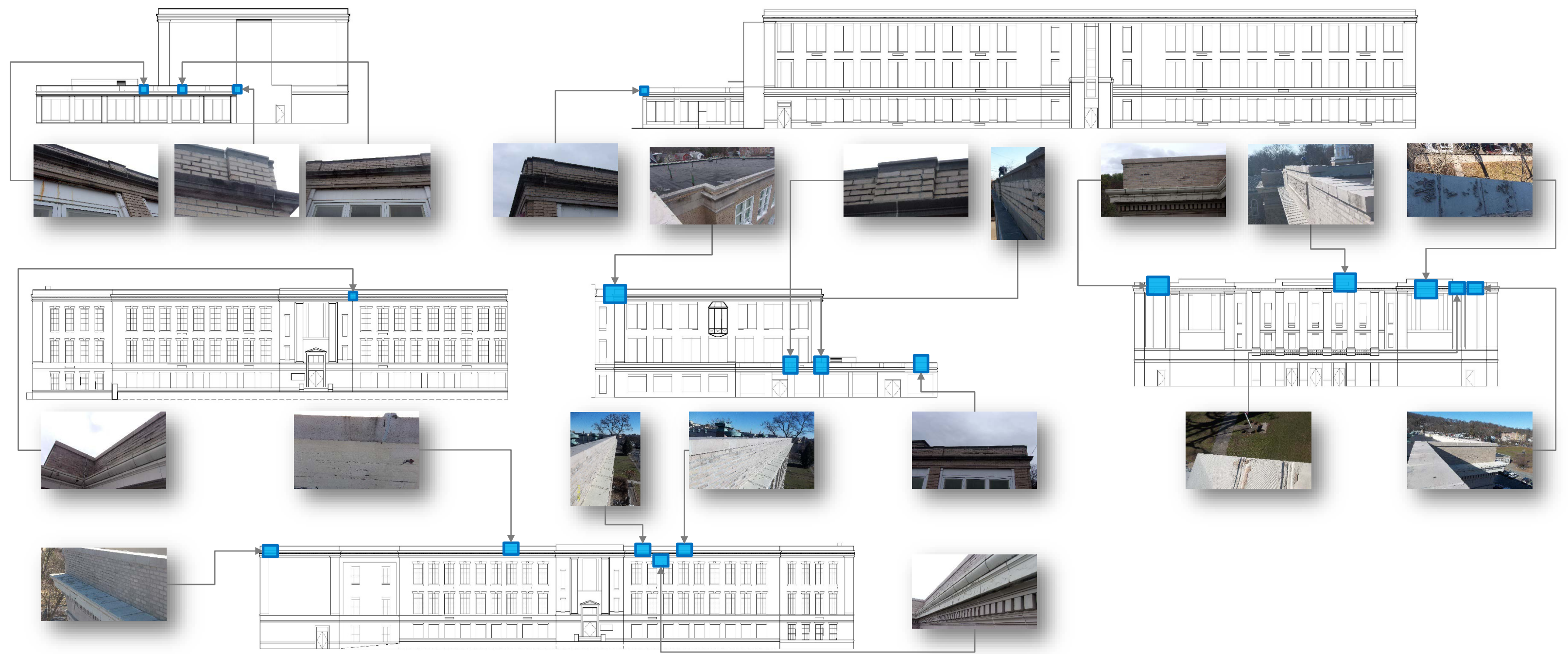
# BUILDING MASONRY - INVESTIGATIONS

EDGEMONT SCHOOL



# BUILDING MASONRY- INVESTIGATIONS

HILLSIDE ELEMENTARY SCHOOL



# BUILDING MASONRY- INVESTIGATIONS

HILLSIDE ELEMENTARY SCHOOL





# BUILDING MASONRY-NEXT STEPS

BUDGET

TBD

COMPLETE EXISTING CONDITIONS DRAWINGS

January 2020

CONSTRUCTION DOCUMENTS

April to June 2020

BIDDING

July 2020

CONSTRUCTION

Summer 2020/ Fall 2020 to Fall 2021

THANK YOU